

ENVIRONMENTAL PROTECTION FOR YOUR CONNECTIONS

Controlwell presents a range of Junction Boxes manufactured from Halogen-free ABS, which offers superior resistance to chemicals and atmospheric agents.

Available with Smooth Walls, Membranes and Nipples to allow wire entry, these junction boxes offer IP65 protection by means of the silicon rubber gasketing. They are available with press-on type, screw type and hinge type lids which may be grey in colour or transparent. Also, available in heavy duty die cast aluminium material.

This range exemplifies the fact that we at Controlwell are dedicated to providing your connections with **The Right Protection.**

JUNCTION BOXES

HOUSINGS FOR
ENVIRONMENTAL
PROTECTION



JUCTION BOXES (WITH SMOOTH WALLS)



Junction Boxes are made of halogen-free thermoplastic, which has high resistance to chemicals and atmospheric agents. By virtue of the design they offer IP 65 protection with the help of silicon rubber gasket in EPDM. They are available with plain walls, knockouts, nipples and membrane. Junction-Boxes are offered with press-on lids, screw lids and hinged lids. Stainless steel screws are also available on request for lid fastening. Choice of grey colour lid or transparent lid is also available on request.

Technical Details :

Material	Thermoplastic
Colour	Grey
Screw	Stainless Steel / Nylon
Gasket	Silicon Rubber EPDM
Lid	Grey Colour / Transparent
Standard	IEC 670, CEI 23-48
Protection Class	IP 65 / IP 66
Temperature Range	-25°C to +60°C
Approvals	CE

Grey cover with Stainless Steel Screws

Cat. No.	Internal Dimension (mm) L x W x H
M003.PL *	80 x 80 x 40
M005.PL	100 x 100 x 50
M006.PL	100 x 100 x 70
M007.PL	123 x 75 x 51
M007.X.PL	110 x 80 x 60
M008.PL	150 x 110 x 70
M009.PL	190 x 145 x 72
M010.PL	243 x 190 x 90
M011.PL	243 x 190 x 110

* Press-on Lid with IP 44 protection

Grey cover with Nylon Hinged Screws

Cat. No.	Internal Dimension (mm) L x W x H
M009.A.PL	190 x 140 x 75
M010.A.PL	238 x 190 x 90
M012.A.PL	300 x 220 x 120
T2356(H)	360 x 250 x 150
M014.A.PL	376 x 300 x 120
M015.A.PL	456 x 380 x 121

Grey High Top cover with Stainless Steel screws

Cat. No.	Internal Dimension (mm) L x W x H
M008.CA.G	150 x 110 x 135
M009.CA.G	190 x 145 x 135
M010.CA.G	243 x 190 x 155
M011.CA.G	243 x 190 x 170
M012.CA.G	310 x 230 x 160
T2256	360 x 250 x 150
M014.CA.G*	376 x 300 x 180
M015.CA.G*	460 x 380 x 182

* Nylon hinged screw with IP 65 protection

Transparent cover with Stainless Steel Screws

Cat. No.	Internal Dimension (mm) L x W x H
M008.PK	150 x 110 x 70
M009.PK	190 x 145 x 72
M011.PK	243 x 190 x 110

Transparent cover with Nylon Screws

Cat. No.	Internal Dimension (mm) L x W x H
M009.A.PK	190 x 140 x 75
M010.A.PK	238 x 190 x 90
M012.A.PK	300 x 220 x 120
T2366(H)	360 x 250 x 150
M014.A.PK	376 x 300 x 120

Transparent High Top cover with Stainless Steel screws

Cat. No.	Internal Dimension (mm) L x W x H
M008.CA.K	150 x 110 x 135
M009.CA.K	190 x 145 x 135
M010.CA.K	240 x 190 x 155
M011.CA.K	243 x 190 x 170
M012.CA.K	310 x 230 x 160
T2266	360 x 250 x 150
M014.CA.K*	376 x 300 x 180
M015.CA.K*	460 x 380 x 182

* Nylon screw with IP 65 protection

JUCTION BOXES (WITH MEMBRANES & NIPPLES)



Specially designed and moulded Membranes in these Junction Boxes, act as a Cable Glands offering IP 65 protection. After piercing the membrane with a sharp instrument, the cable / flexible conduit has to be inserted and slightly pulled out (withdrawn) to achieve a tight wrap around the cable / conduit resulting in positive clamping. Junction Boxes are also available with specially designed Nipples which act as Cable Glands offering IP 65 protection.

Technical Details :

Material	Thermoplastic
Colour	Grey
Screw	Stainless Steel / Nylon
Gasket	Silicon Rubber EPDM
Lid	Grey Colour / Transparent
Standard	IEC 670, CEI 23-48
Protection Class	IP 67
Approvals	CE

Junction Boxes with Membrane - Grey cover

Cat. No.	Internal Dimension (mm) L x W x H	No. of Membranes
M005.CV	94 x 94 x 50	10 + 2
M008.PG*	150 x 110 x 70	10
M009.PG*	190 x 145 x 70	10
M011.PG*	243 x 190 x 110	12

* IP 66 protection

Junction Boxes with Nipples - Grey / Transparent cover with stainless steel / hinged screw (IP 65)

Cat. No.	Internal Dimension (mm) L x W x H	No. of Nipples
M003 *	80 x 80 x 45	6
M005	100 x 100 x 50	6
M006	100 x 100 x 70	6
M007	123 x 75 x 51	6
M008	150 x 110 x 70	10
M009	190 x 145 x 72	10
M010	243 x 190 x 90	12
M011	243 x 190 x 110	12
M009.PKN **	190 x 145 x 170	10
M014.A.CA.K	380 x 300 x 180	12
M014.A.PKN	380 x 300 x 120	12

* Press-on Lid with IP 44 protection

** With transparent Lid

Junction Boxes with Nipples - Grey cover with nylon hinged screws (IP 65)

Cat. No.	Internal Dimension (mm) L x W x H	No. of Nipples
M009.A	190 x 140 x 75	10
M010.A	238 x 190 x 90	12
M012.A	300 x 220 x 120	12
M014.A	376 x 300 x 120	12
M015.A	456 x 380 x 120	14

JUCTION BOXES (WITH KNOCKOUTS)



Junction Boxes with knockouts are made of halogen-free ABS, which has high resistance to chemicals and atmospheric agents. These knockouts can be easily cut out in a wide range of diameters allowing for a selection of cable gland size as per cable diameter. By virtue of the design they offer IP 65 protection with the help of silicon rubber gasket in EPDM. They are available with plain walls, nipples and membrane. Junction-Box are offered with press-on lids, screw lids and hinged lids. Stainless steel screws are also available on request for lid fastening. Choice of grey colour lid or transparent lid is also available on request.

Technical Details :

Material	Thermoplastic
Colour	Grey
Screw	Zinc Plated and Chromate passivated
Gasket	Silicon Rubber EPDM
Lid	Grey Colour / Transparent
Standard	IEC 670, CEI 23-48
Protection Class	IP 67
Approvals	CE

Grey Screwed Lid

Cat. No.	Internal Dimension (mm) L x W x H	No. of Knockouts
T2056M *	90 x 90 x 50	4
T2136M	110 x 110 x 65	8
T1505M	150 x 110 x 70	10
T2176M	210 x 140 x 90	12
T5005M	210 x 210 x 90	12
T2156M	290 x 210 x 90	14

* IP 44

Grey Screwed High Top Lid

Cat. No.	Internal Dimension (mm) L x W x H	No. of Knockouts
T2186	220 x 130 x 140	12
T5205M	210 x 210 x 140	12
T8205M	240 x 190 x 160	12
T2226M	290 x 210 x 140	14
T7205M	290 x 290 x 140	16

Transparent Screwed Lid

Cat. No.	Internal Dimension (mm) L x W x H	No. of Knockouts
T2141M	210 x 110 x 70	12
T2171M	210 x 140 x 90	12
T2141	180 x 110 x 70	12
T2171	220 x 130 x 95	12

WEATHER PROOF ENCLOSURES



These industrial grade Polycarbonate boxes are suited for outside applications. Made of UV resistant plastic, these enclosures can be an excellent solution for making combiner boxes for PV (Solar) applications.

Technical Details :

Material	Polycarbonate
Colour	Grey
Screw	Zinc Plated and Chromate passivated
Gasket	Silicon Rubber EPDM
Lid	Grey Colour / Transparent
Standard	IEC 670, CEI 23-48
Protection Class	IP 66 / IP 67
Approvals	CE

Grey Screwed Lid / High Top Grey Screw Lid

Cat. No.	Internal Dimension (mm) L x W x H
BC-CGS-080806	80 x 80 x 60
BC-CGS-081107	110 x 80 x 70
BC-CGS-101007	100 x 100 x 75
BC-CGS-151507	150 x 150 x 75
BC-CGS-202010	200 x 200 x 100

Transparent Screwed Lid / High Top Transparent Screw Lid

Cat. No.	Internal Dimension (mm) L x W x H
BC-CTS-080806	80 x 80 x 60
BC-CTS-081107	110 x 80 x 70
BC-CTS-101007	100 x 100 x 75
BC-CTS-151507	150 x 150 x 75
BC-CTS-202010	200 x 200 x 100
BC-CTS-192813	280 x 190 x 130
BC-CTS-285613	560 x 280 x 130

DIN RAIL MOUNTED SWITCHES, SOCKETS & SCHUKO SOCKETS



TSSEB16



CDINS6 / CDINS16



CDINSUK



CDINS16



CDINSW1 / CDINSW2

Cat. No.	Descriptions
TSSEB16	16 A Schuko Socket for Europe
CDINS6	6 A Din Rail Mounted Socket
CDINS16	16 A Din Rail Mounted Socket
CDINSUK	16 A Din Rail Mounted Socket for UK
CDINS16	16 A Din Rail Mounted Socket for FRANCE
CDINSW1	16 A Single Pole Din Rail Mounted Switch
CDINSW2	16 A Double Pole Din Rail Mounted Switch
M1412.D	DIN Rail mounted Europe socket
M14121.FR	DIN Rail mounted French socket

ALUMINIUM ENCLOSURES



These Powder coated heavy duty aluminium die cast enclosures made with corrosion resistant alloy provides best stability and long life.

These enclosures offer IP66 level ingress protection with one piece compression moulded rubber compound gasket in neoprene or silicon.

Suitable for Indoor as well as outdoor applications.

Accessories such as mounting plates, external hinges, wall mounting brackets are available on request.

Technical Details :

Material	Aluminium Alloy
Lid Mounting Screws	Stainless Steel 304
Earthing Screws	Copper Coated Steel Screws with Integral inbuilt spring washer
Gasket	Neoprene
Colour	Silver Grey (RAL7001)
Protection Class	IP-66
Temperature Range	-40°C to +130°C
Standards	EN 60529:2001, DIN EN6059
Approvals	RoHS, REACH

Cat. No.	Outer Dimension (mm) L x W x H	MOQ
CTAL01	45 X 50 X 30 mm	5
CTAL02	64 X 58 X 34 mm	5
CTAL03	98 X 64 X 34 mm	5
CTAL04	75 X 80 X 57 mm	5
CTAL05	125 X 80 X 57 mm	5
CTAL06	175 X 80 X 57 mm	5
CTAL07	250 X 80 X 57 mm	5
CTAL08	100 X 100 X 81 mm	5
CTAL09	120 X 122 X 81 mm	5
CTAL10	120 X 122 X 91 mm	5
CTAL11	140 X 140 X 91 mm	5
CTAL12	160 X 160 X 91 mm	5
CTAL13	180 X 180 X 101 mm	5
CTAL15	220 X 120 X 81 mm	5
CTAL16	220 X 120 X 91 mm	5
CTAL17	260 X 160 X 91 mm	5
CTAL19	400 X 230 X 180 mm	5

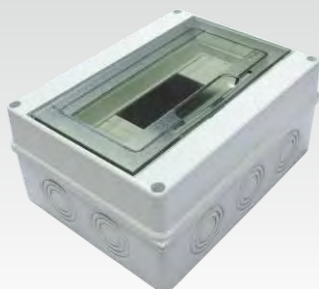
IP 67 EMPTY COMBINATION BOXES FOR INDUSTRIAL PLUG & SOCKETS



These combination boxes are an ideal choice for combining Industrial Plugs & Sockets (CEE Connectors) & miniature circuit breakers. Various multi pin sockets can be mounted on the front of the box. This in conjunction with the circuit breakers provide an easy solution for mobile power outlet boxes typically required on off site locations as well as factory shop floors.

Cat. No.	Internal Dimension (mm) H x W	Ingress Protection	Type of Modules
M960.10121	340 x 440 x 177	IP 65	14 MCB

DISTRIBUTION BOARDS



These enclosures are used for creating power distribution circuits. Various options are available based on the number of miniature circuit breakers (MCBs), that can be installed inside in an array. Most of these enclosures have hinged lids for easy access to the MCBs installed inside.

Cat. No.	Internal Dimension (mm) H x W	Ingress Protection	Type of Modules	Description
M91.04	100 x 135 x 85	IP 40	2/4 Module	Without Hinged Lid
M91.08	200 x 155 x 90	IP 40	4/8 Module	Without Hinged Lid
M92.04	120 x 160 x 90	IP 65	3/5 Module	With Smoked Hinged Lid
M92.08	200 x 160 x 90	IP 65	4/8 Module	With Smoked Hinged Lid
M92.12	250 x 200 x 110	IP 65	6/12 Module	With Smoked Hinged Lid